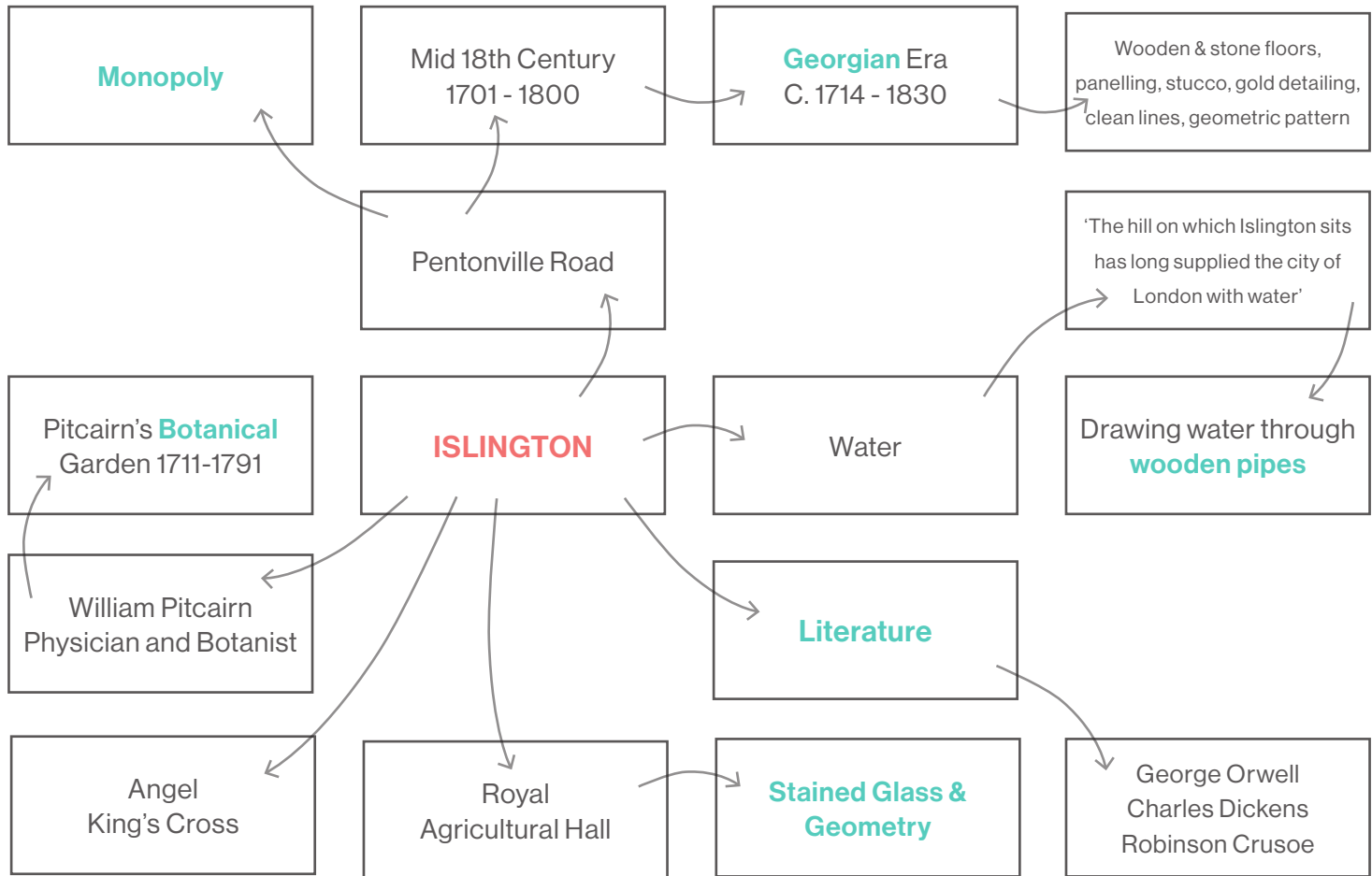
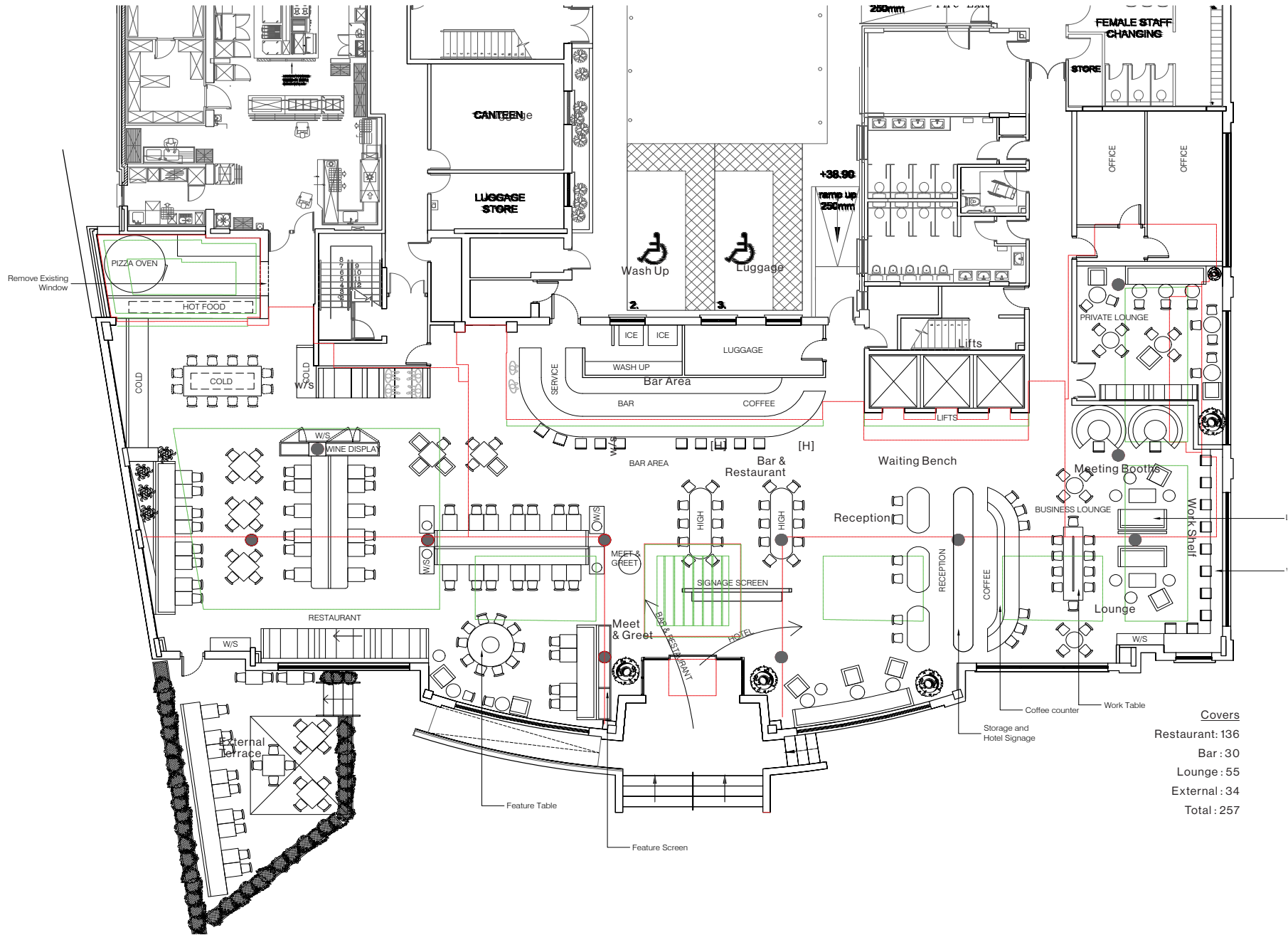


Hotel Project.

Faradays

January 2020



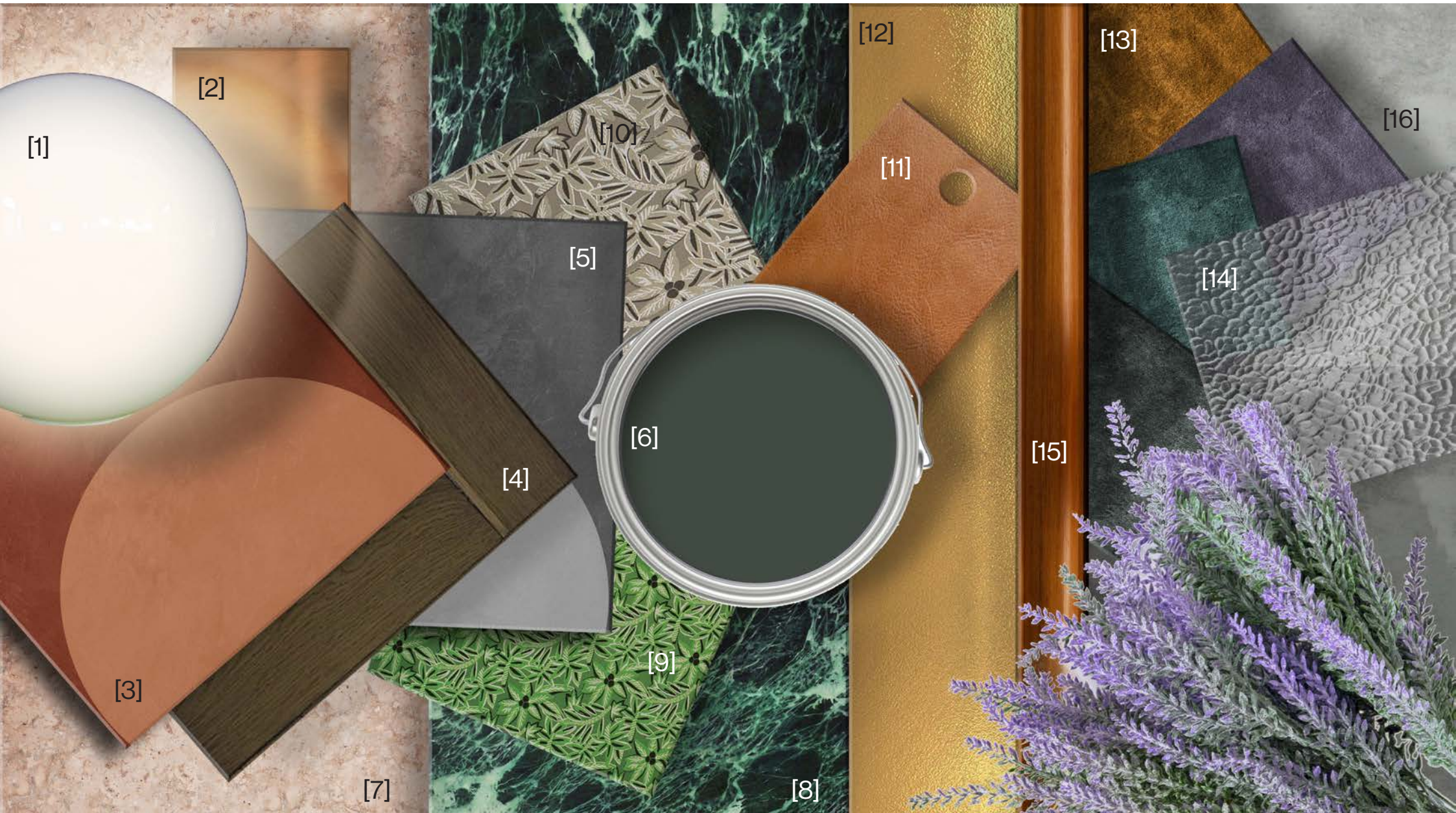


Covers

Restaurant:	136
Bar:	30
Lounge:	55
External:	34
Total:	257



Rendered Perspective Plan -



[1] Opal glass globes with warm ambient lighting [2] Shiny copper accents to compliment the primary colour scheme [3] Bespoke two tone terracotta tiles in a earthy hue [4] Warm timber finishes [5] Bespoke two tone grey tiles to define key areas [6] Farrow and Ball Studio Green paint [7] Pink marble to compliment the earthy hues [8] Green veined marble to add pops of colour to tables [9] Osborne and Little LouLou NCF4283-04 fabric [10] Osborne and Little LouLou NCF4283-02 fabric [11] Tan leather to compliment the green finishes to the walls [12] Gold accents used throughout to add shine and reflections [13] Mix colours of contract grade velvet fabrics to add softer feminine touches to the soft furnishings [14] Arctic mottled glass to add distortion and a nod to traditional Georgian architecture [15] Fluted veneered panels to counterfronts

Restaurant.

Stay. Socialise. Relax - A social hub of activity with flexibility to suit the varied needs of all guests.

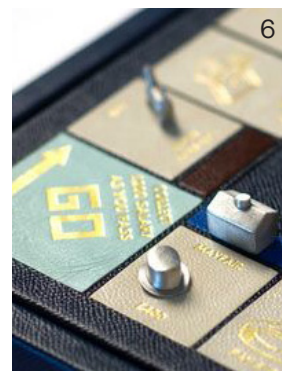
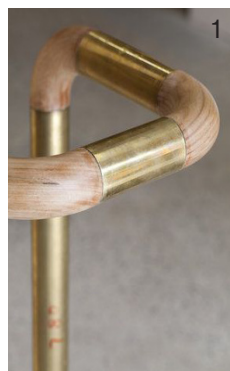
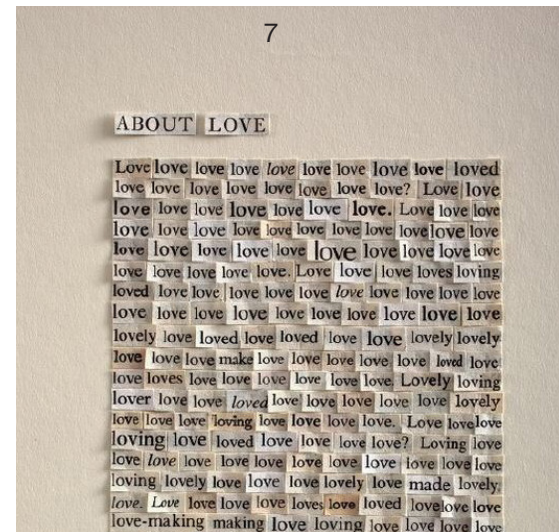
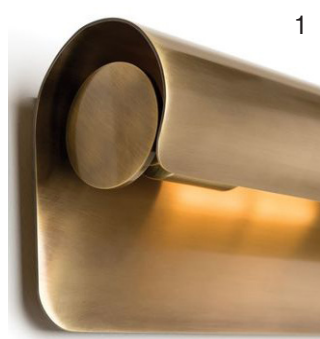
Subtle references to the local history of Coventry build the foundation of the concept, whilst remaining contemporary in style to complement the architecture of the space.



[1] A communal space to cater for residents, working and socialising [2] Artwork content in reference to famous Coventry literature [3] Incorporating the Isle of Capris casino as a reference to Coventry's heritage

Delicate elegance - a contemporary take on the principles of Georgian design, overlaid with contemporary pattern and colour, to generate a warm and inviting environment.

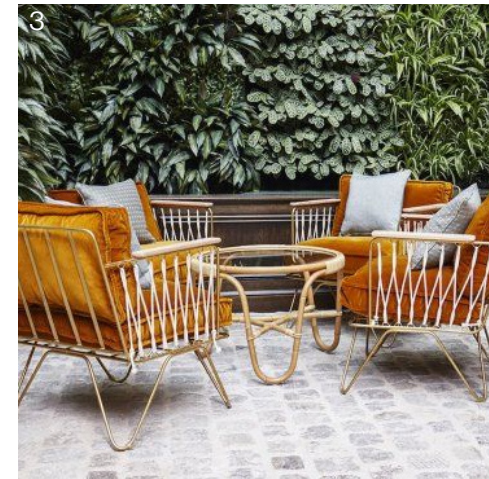
Quirky features, from the Isle of Capri fit-out, allow truly unique design elements to personalise the space.



[1] Georgian inspired gold detailing to joinery and fixtures [2] Simple geometric repeat patterns inspired by Georgian principles. [3] Stucco influenced artwork style [4] Coloured glass lighting to harmonise with bespoke screens [5] Wooden tube pendant lighting [7] Literature artwork

A warm and inviting first impression, prominent from the busy Pentonville Road approach.

Festoon lights giving a warm glow, with comfy external grade sofas and soft seating. Feminine touches with floral cushions and battery powered table lights.



[1] Battery powered table lamps to add low level intimate lighting [2] Fret cut back-lit signage to main entrance [3] Relaxed, sophisticated armchairs and loose seating to the external areas. Upholstered in durable yet feminine looking fabrics [4] Using lavender in the planters to add colour but also a pleasant smell to the terrace [5] Needs to look cosy and a place in the summer months to spend the evening and celebrate.



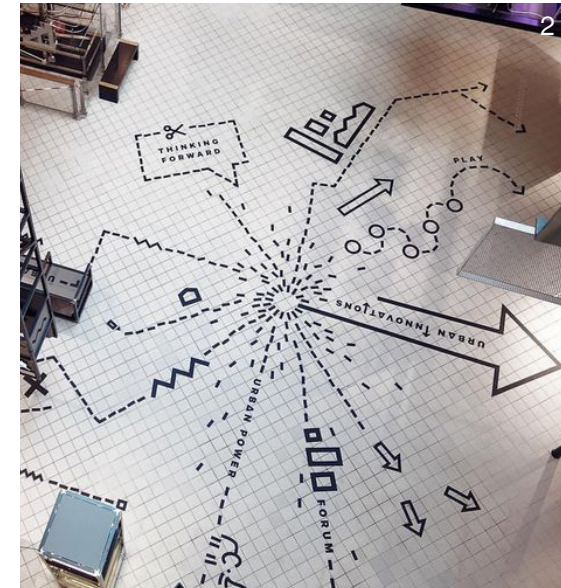
External Terrace Visual Day



External Terrace Visual Evening

Punchy signage enhances street level presence and ensures high impact to passers-by, residents, event and casino customers.

Quirky internal wayfinding creates an engaging and more personal arrival, whilst a relaxed check in sets the tone.



[1] Illuminated signage and pictorial graphics within shopfront [2] Freestanding signage wall and floor graphics generate personality, whilst creating an efficient tool for navigation [3] Friendly and informal language for a more personal approach [4] Gold finishes and simple, elegant furniture in a nod to Georgian design



Arrival & Reception Visual

Warm tones, curved detailing and soft upholsteries generate a relaxed, but elegant restaurant space to suit dining.

Bespoke ceiling features, screens and artwork create an individual narrative, unique to the site and it's local history.



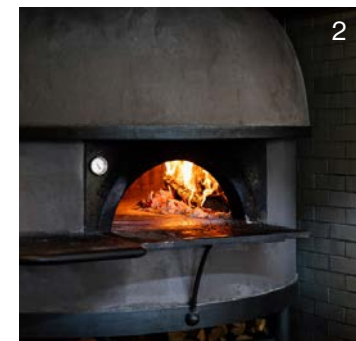
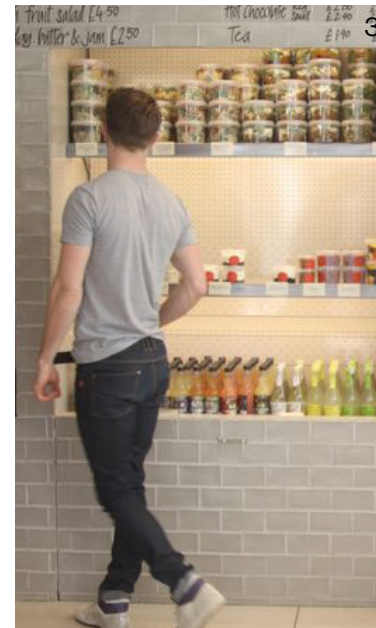
[1] A unique botanical ceiling raft & pendant to the feature dining table [2] Panelled walls, rich colour palette, gold detailing and elegant furniture inspired by Georgian interiors, delivered in a contemporary style [3] Screens, inspired by The Royal Agricultural Hall, help to zone areas but allow vision through, for a dynamic and cohesive space [4] Low level lighting to seating assist in creating a cosy and comfortable environment [5] Making use of the existing columns and creating a focal point for contextual artwork



Restaurant Visual

An area designed for multi purpose use, to cater for the changing dynamic of the restaurant throughout the day.

Informal tables which can transition from breakfast display to Chef's Table dining, including hot counter with vision through to the kitchen for a sense of theatre and energy.



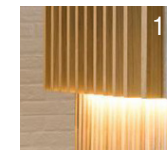
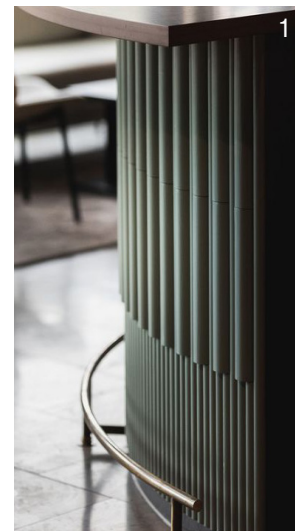
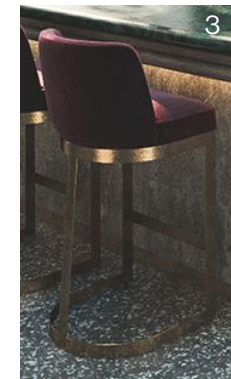
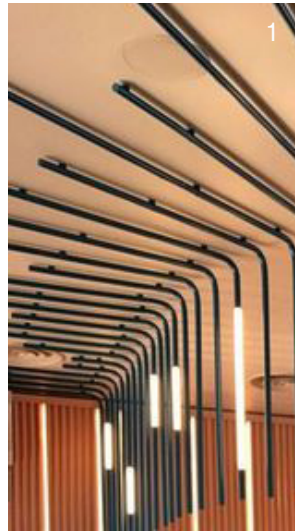
[1] Trestle style table to provide cold display for breakfast and dining covers for lunch and dinner service [2] Open kitchen with view through to pizza oven [3] Hot counter space and chilled units to display breakfast buffet [4] Backless stools for dining can be pushed below open table for storage when not in use



Food Counter Visual

A unique bar counter with sculptural and artist elements, adapted to the current carcass.

Busy bottle display and prominent coffee machine promote services from arrival, whilst communal high level seating offers flexibility to suit large groups down to individuals.



[1] Wall separating bar from restaurant space removed

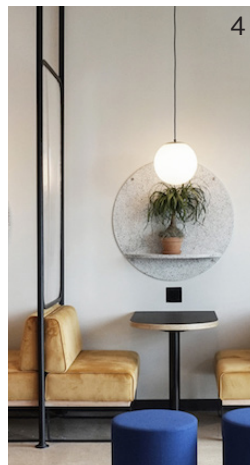
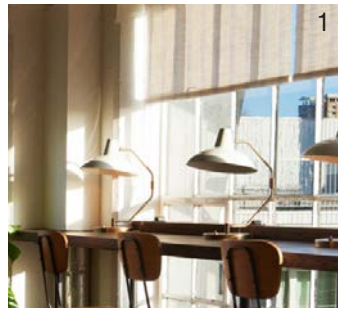


Bar Visual

A space located away from the chatter of the bar and hustle of the kitchen, provides an area for customers seeking a quieter spot to catch up on emails or take a well earned break.

Whilst angled towards a space to work, the informal furniture style generates an environment which encourages customers to dwell, whether it be for business or pleasure.

[1] Table lamps to high level work bench create the ideal spot for individuals to work undisturbed [2] Soft seating styles cater for solo or group requirements, in an informal style [3] A bespoke bookcase display in a nod to the literature history of Islington [4] Screened working booths create the ideal place for a catch up meeting [5] Water inspired detailing to joinery relevant to local history [6] User friendly sharing tables with easy access power [7] Magazine and newspaper display





Lounge Area Visual

Thank you

LONDON, UK

39 Margaret Street
London W1G 0JQ

+44(0)207 046 6556

BIRMINGHAM, UK

15 Coleshill Street
Sutton Coldfield B72 1SD

+44(0)121 321 3030

DALLAS, USA

14990 Landmark Blvd
Suite 265
Dallas TX75254

+1972 807 9257

harrison.hn